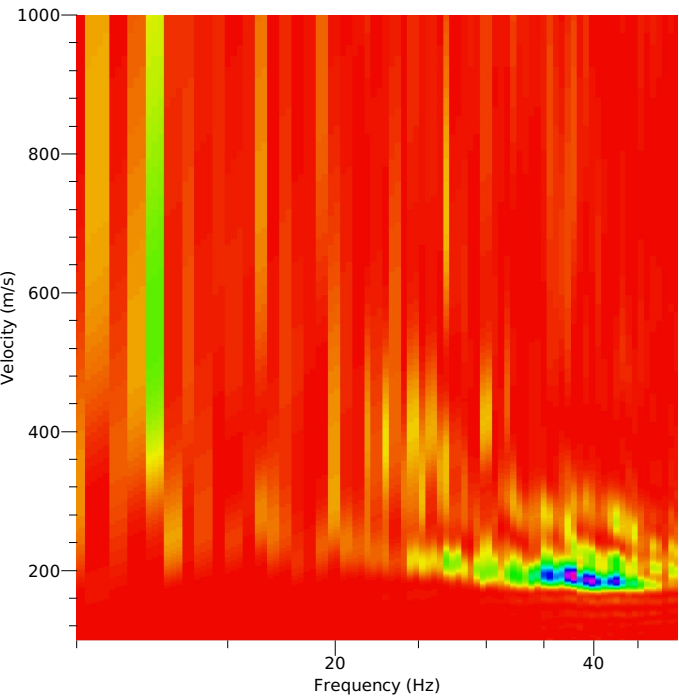
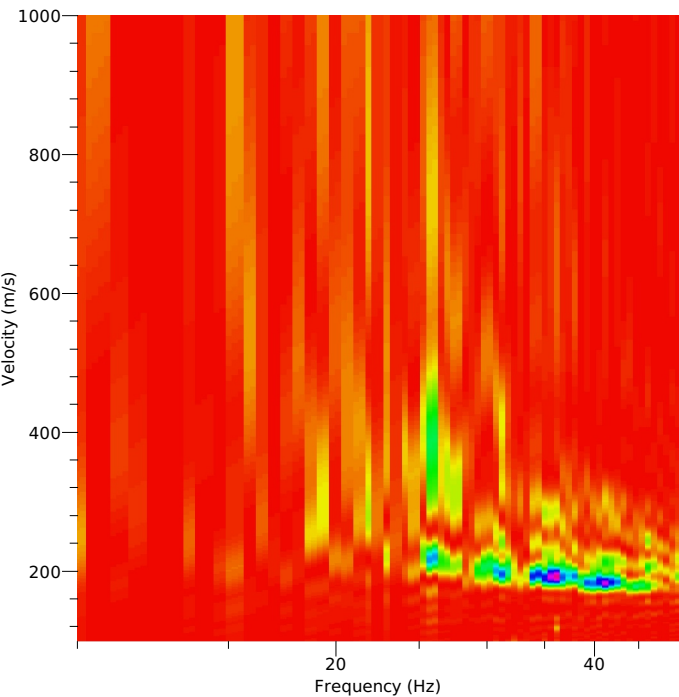


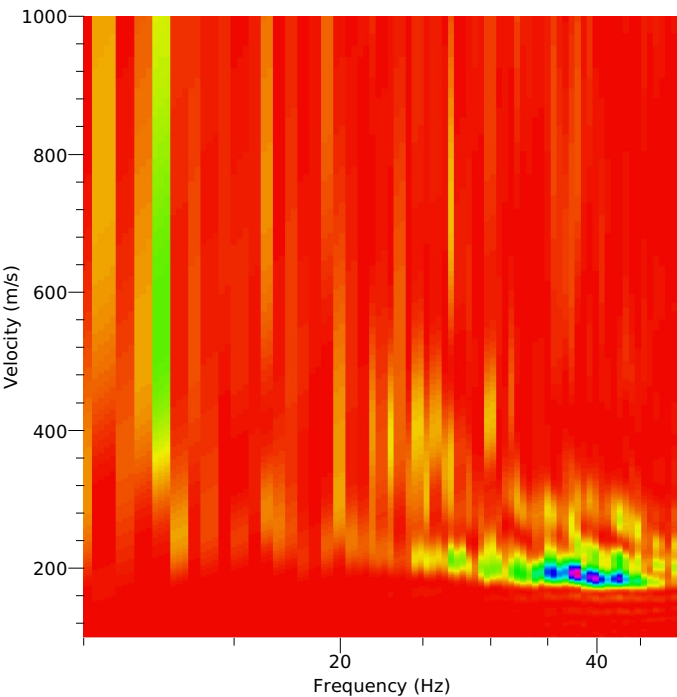
Shot at (-2, 0, 0), time=2017-02-21 21:13:18 1001



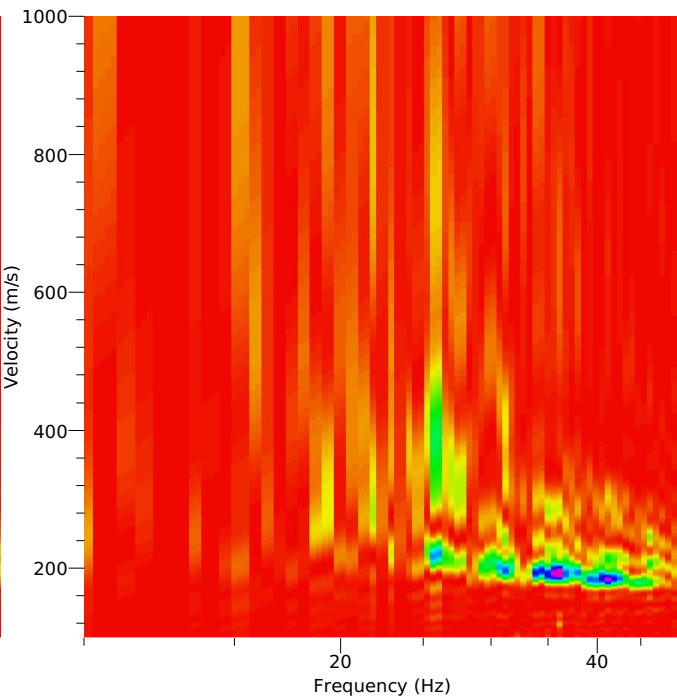
Shot at (-2, 0, 0), time=2017-02-21 21:13:19 1002



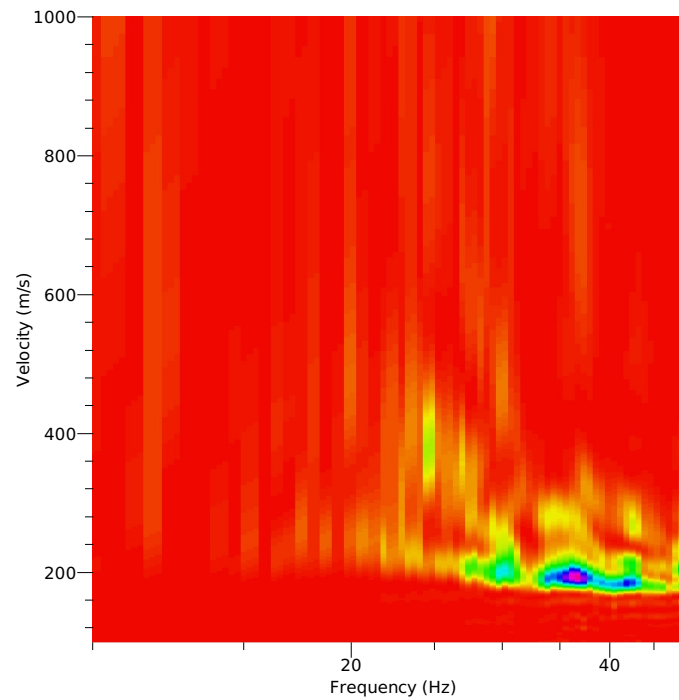
(-2 0 0) @ 11:13:27



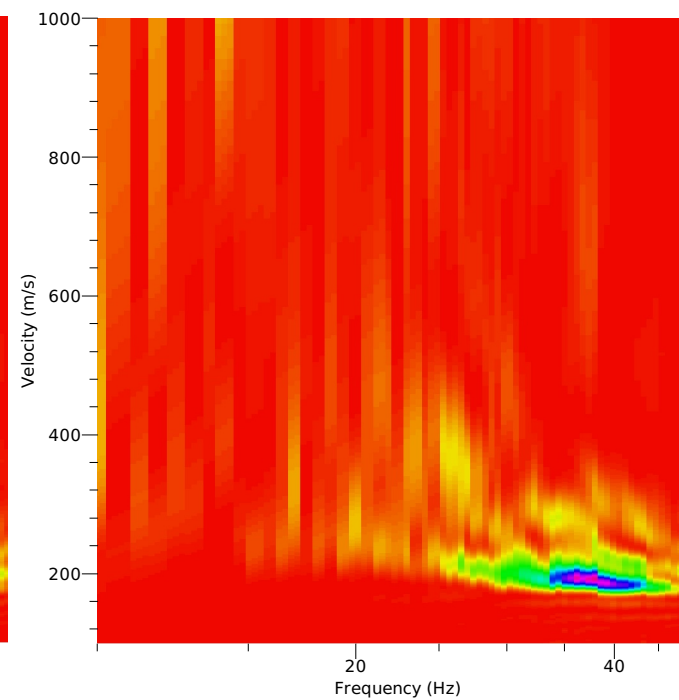
(-2 0 0) @ 11:13:42



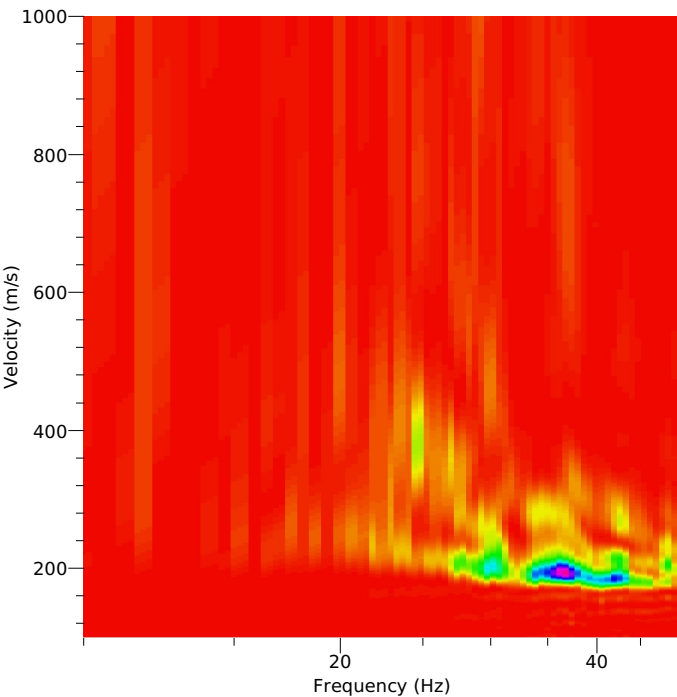
Shot at (-2, 0, 0), time=2017-02-21 21:13:19 1003



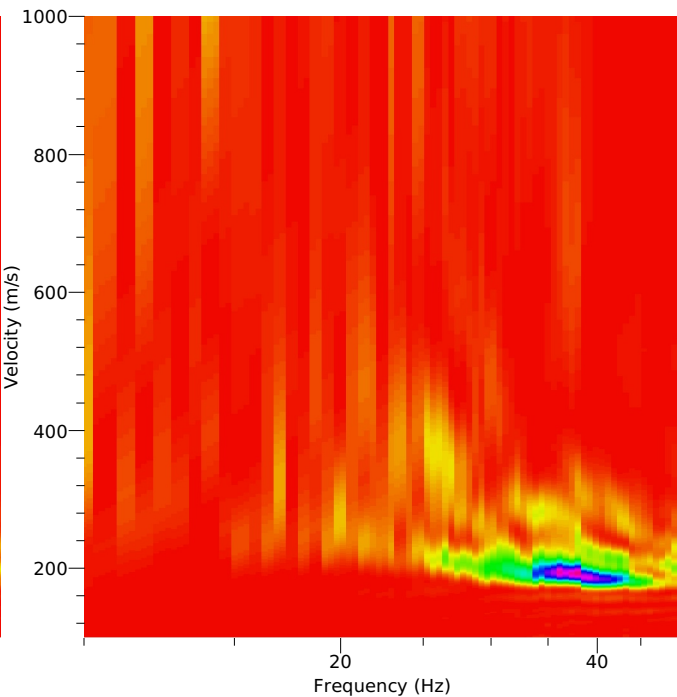
Shot at (-2, 0, 0), time=2017-02-21 21:13:19 1004



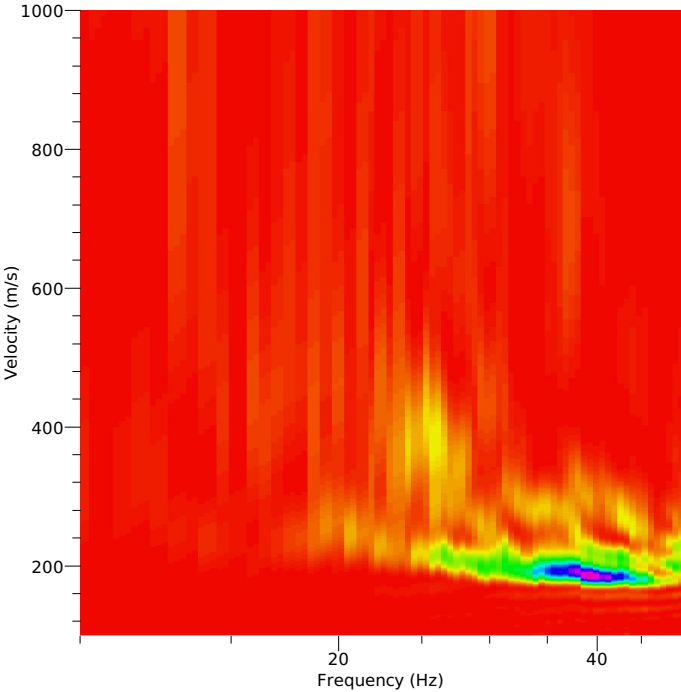
(-2 0 0) @ 11:13:56



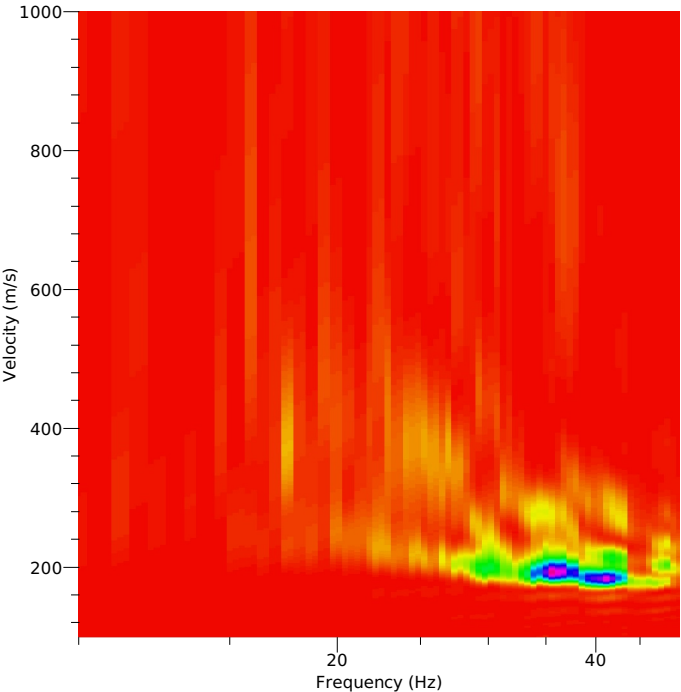
(-2 0 0) @ 11:14:09



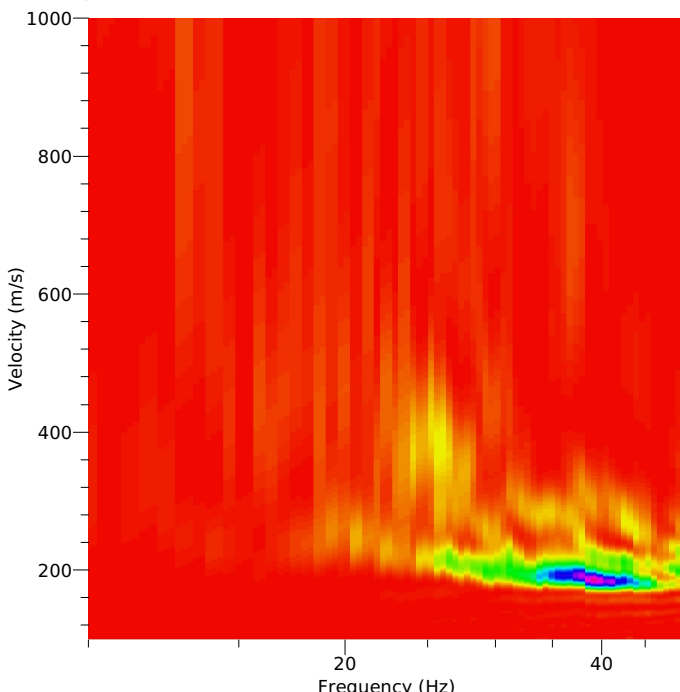
Shot at (-2, 0, 0), time=2017-02-21 21:13:18 1005



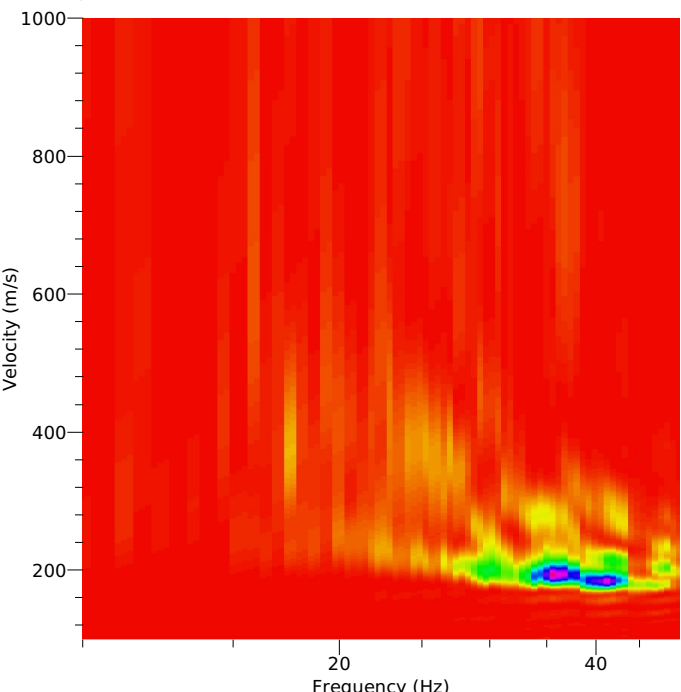
Shot at (-2, 0, 0), time=2017-02-21 21:13:19 1006



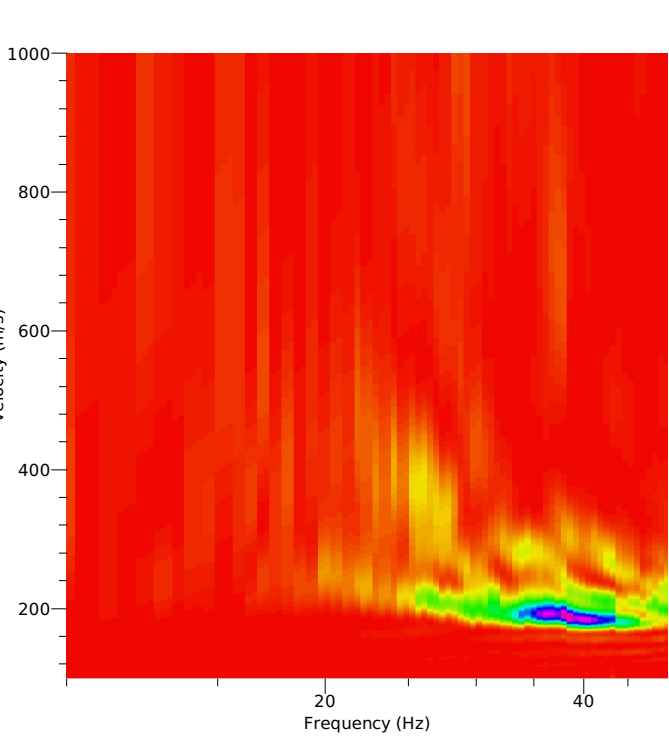
(-2 0 0) @ 11:14:27



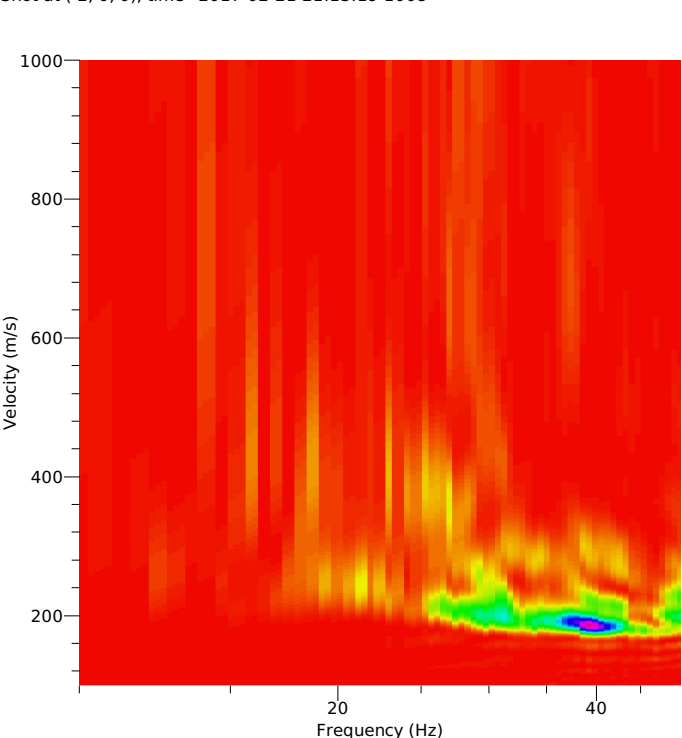
(-2 0 0) @ 11:14:37



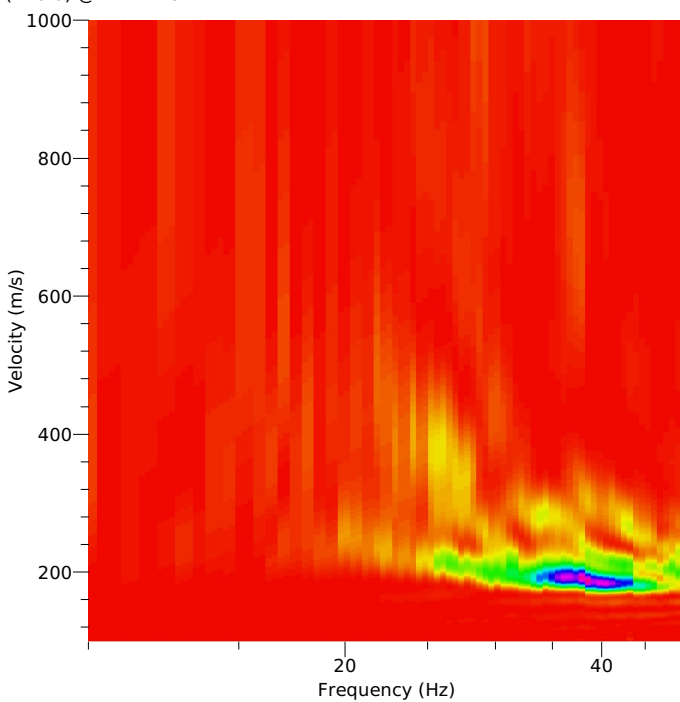
Shot at (-2, 0, 0), time=2017-02-21 21:13:18 1007



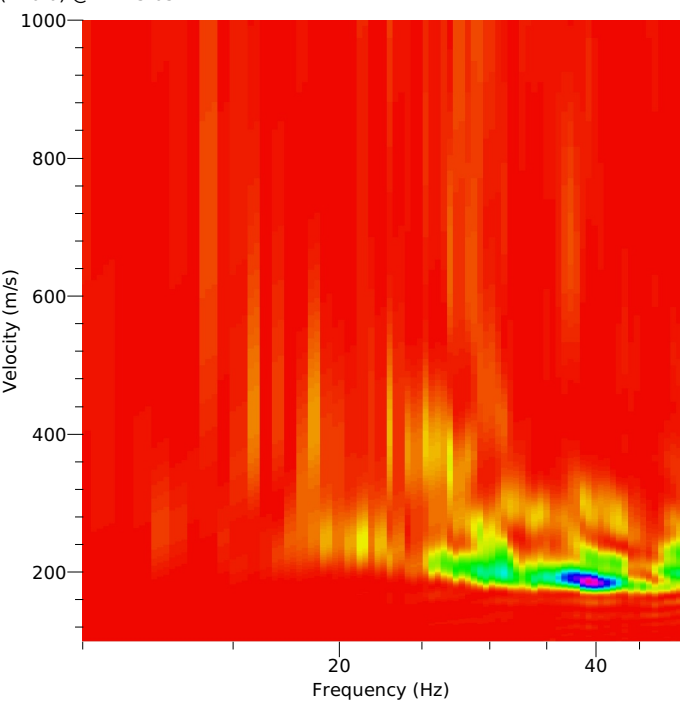
Shot at (-2, 0, 0), time=2017-02-21 21:13:19 1008

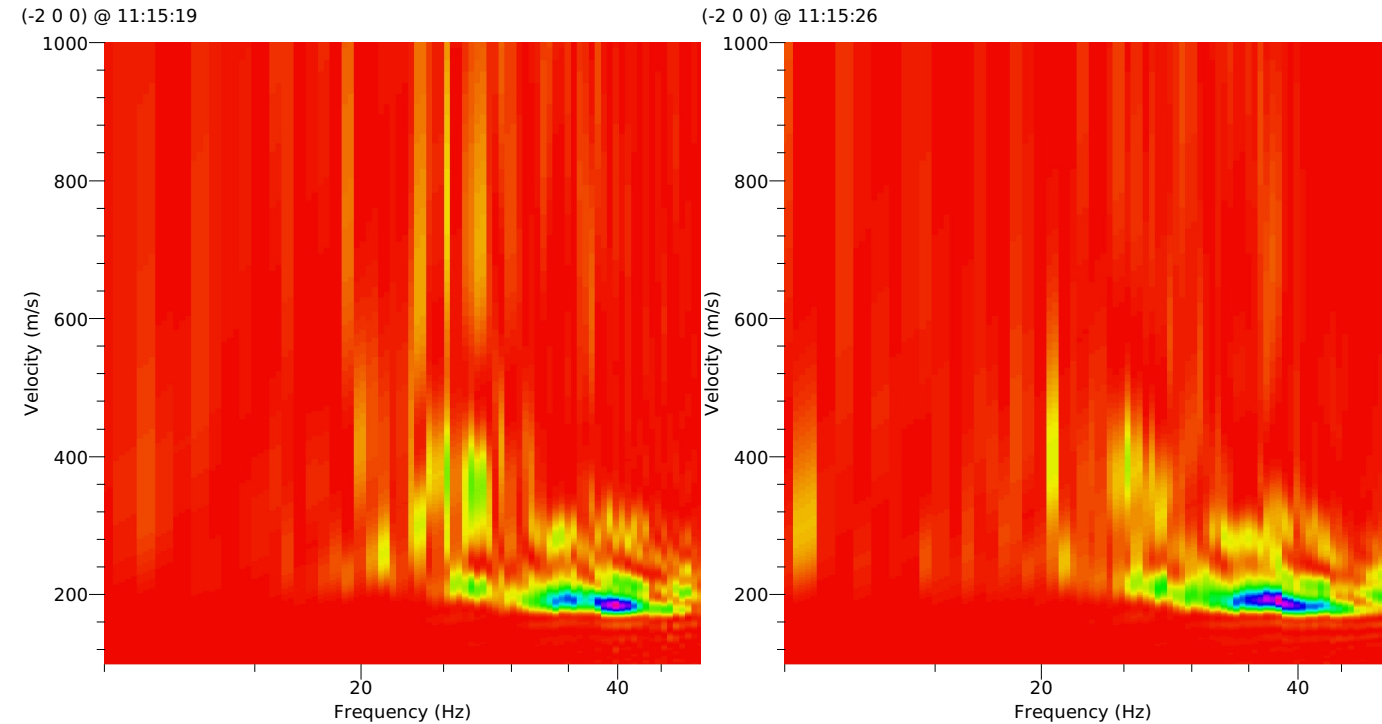
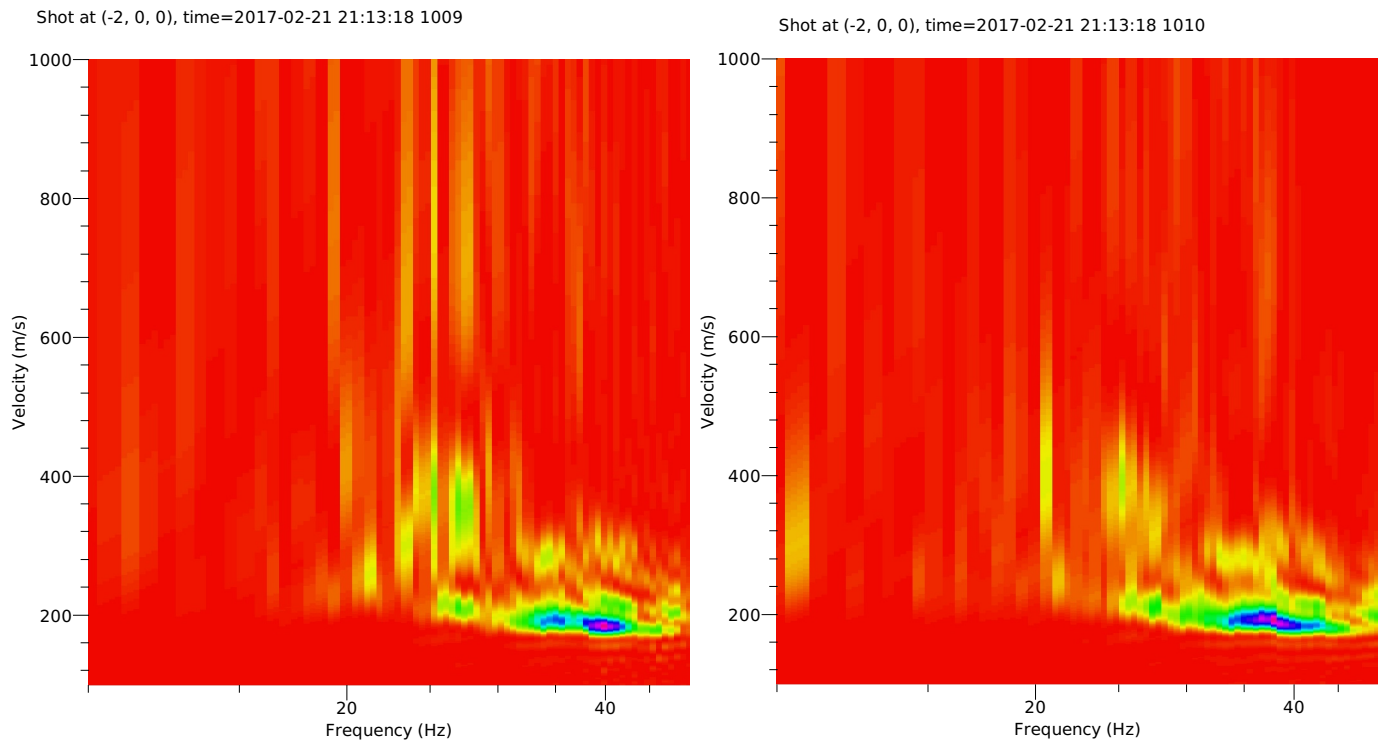


(-2 0 0) @ 11:14:49



(-2 0 0) @ 11:15:05





Data: 1001.dat to 1010.dat in "courses/201402-Grenoble/usb/FIELD_DATA/MASW/PROFILE_1/VERTICAL"

- Compile 3.1.0 with define COMPATIBILITY_2_5_0
- Force full spectrum computation even for null bandwidth
 - No amplitude correction (1/sqrt(distance))
 - Bounds of the Gaussian filter obtained with round() instead of ceil/floor
 - Fourier spectrum with wrong factor
 - Tukey taper cosine ranges enlarge by one sample
 - SamplingParameter not aligned with roundMin

Fix CountPerVolt by dividing it by 1000
[Seg2 is in millivolts, which was not properly taken into account by old releases]

- Under 2.5.0,
- min dist 10 m, max dist 200 m
 - no taper
 - no normalization
 - from 0 s to 1.7 s
 - bandwidth 0.0
 - raw beam power
 - velocity sampling from 100 to 1000 with 500 samples (linear)
 - frequency sampling from 10 to 50 with 100 samples (log)

- Under 3.1.0
- min dist 10 m, max dist 200 m
 - from 0 s to 1.7 s
 - conventional
 - bandwidth 0.0
 - oversampling 1
 - slowness sampling from 100 to 1000 with 500 samples (linear)
 - frequency sampling from 10 to 50 with 100 samples (log)
 - inverse Y axis of all plots
 - load palette exported from 2.5.0 (default colors are not the same) et re-run process